

OTTAWA RIDEAU SOIL AND CROP NEWS

Serving Grenville, Lanark, Leeds, Ottawa-Carleton, Renfrew and Frontenac
Special thanks to the Ottawa Valley Seed Growers for their continued support of our activities.

March 2011

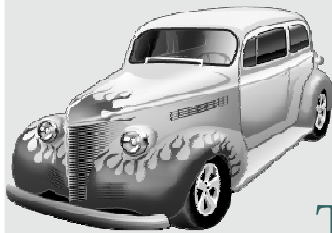
Next Newsletter Deadline
June 1st, 2011

Inside this issue:

Regional Update - Provincial Outreach	2
County Updates	34
Lanark Seed Show	5
Leeds Seed Show	6
Renfrew Seed Show	7
Frontenac Seed Show	8
OMAFRA Update	9
Regional News	11
Grain Drying Workshops on Back Cover	

Also included:

- OSCIA News
- Crop Talk



Regional Car Tour

Wednesday, July 27th, 2011

Turbine, Micro-fit Power & Plot Tour

Pre-registration is required for the

Lunch which will be provided by Pioneer Seeds

More details will follow in next newsletter

For more information and pre-registration

Contact: Shirley Munro, RCC

Tel: 613-267-6362

Email: c-s-munro@live.com

Or

Jason Pyke, President ORRSCIA

Tel: 613-385-2941

Email: pykeview@kingston.net

This newsletter is provided with financial assistance from the following:



"Grassroots innovation
since 1939"





SERVING GRENVILLE,
LANARK, LEEDS,
OTTAWA-CARLETON,
RENFREW AND
FRONTENAC

*Ottawa-Rideau Regional Soil
and Crop Improvement
Association*

c/o Shirley Munro

Regional Communications
Coordinator
RR #7,

570 Cameron Side Road
Perth, ON K7H 3C9
Phone: 613-267-6362
Fax: 613-267-0258

Email: cs-munro@live.com

TO COMMUNICATE
AND FACILITATE
RESPONSIBLE
ECONOMIC
MANAGEMENT OF
SOIL, WATER, AIR
AND CROPS

Canada Post Publications
Agreement #1924648

Regional Update - OSCIA Outreach - March 8, 2011

Wow – what a wonderful opportunity to get some insight into what is happening at the top and share thoughts and ideas! The Ontario Soil and Crop Improvement Association invited local and regional board members to a special Outreach meeting. The first ever meeting of its kind, hosted by members of the Executive, was held in Kemptville on March 8, 2011.

The Board of Directors is working hard to discover how Soil and Crop Members feel about the value they receive for their membership fee and what else they would like to be receiving. Participants from Eastern Ontario counties who attended learned the results of this research and were able to discuss how their successes and difficulties related to them.

Results from the Membership Survey revealed that most responding members have been involved for over 10 years and value most the access to the latest information on crop production. Many view the organization as a good place to learn and test new ideas, indicating they would like to see more involvement in crop trials/plots, as well as more on-farm research and demonstrations on soil management. It is interesting that although 30% said they were aware the Regional Communications Coordinator planned meetings; there were 14% who did not know their RCC was.

Although provincial membership is staying about the same, respondents felt that decreases are due to a lack of farmers. Local and regional directors continue to plan and host lots of interesting activities for their members. Some of the activities include an Education Day with speakers in the morning and nine holes of golf in the afternoon; equipment demonstration events; crop/plot tours; workshops; hay days; speakers of interest at events; tours of operations in other counties or regions – Dundas County is planning a bus tour to the Atlantic Provinces this summer; the Ottawa Rideau Region is planning a tour of the Wind Turbines on Wolfe Island.

A survey sent to local associations to collect ideas on how they renew and expand membership revealed almost as many ideas as there were associations: fees are collected at meetings and events held throughout the year; send invoices to members; directors and secretaries phone members to renew; renewal forms included with newsletter; hosting an event where participants pay an entry fee that includes a membership fee; send an 'invitation to join' letter to prospective members; free meal with new membership at an event, offer multi-year memberships; visit farms with invitation to become a member.

The Secretary/Local Handbook encourages interaction between locals within their region, however it is recognized that funding is deficient for this purpose. Could copies of the "Handbook be made available for the local Presidents?"

Other issues raised included working to have the Eastern Ontario Crop Diagnostic Day discounted to Soil and Crop members and improvements to the French part of the OSCIA website. It is outdated and should be kept up to date, for example there is no biomass information. Perhaps using other resources for translation would enable us to keep our French speaking members updated in a timelier manner.

Additional highlights included a visit from Ashraf Tubeileh, Professor of Agronomy at the Kemptville Campus, University of Guelph, who provided an update on the Biomass research he is conducting. He is also researching fungicides on wheat and oats. He would be happy to show us their plots as part of a tour this summer.

Thank you for allowing Eastern Ontario to be the setting for your initial Outreach meeting.

Ottawa-Carleton SCIA

President: Meghan Gilmer
Tel: 613-880-0541
Email: mgilmer@xplornet.com

Secretary: Lisa Flewellyn
Tel: 613-832-1355
Email: lflewellyn@gmail.com

The OCSCIA held their annual High Yield Celebration at the Marlborough Pub in North Gower Feb 16. The Top Yield Award went to Schoutens's Cornerview Farms Ltd. with 263 bu/acre. Second place at 216 bu/acre went to John Hill of Twin Hill Farms, third prize

went to Doug Moodie of Twin Elm Farms Ltd. Thank you to our sponsors for the evening -- BASF, Dekalb and Pioneer. Information and entry forms for the 2011 competition will be sent out in early April.

On March 8th, Ian MacDonald presented on new technologies in farming including Smartphones. Smartphones have been a hot topic at many ag conferences as the farming community continues to explore the use and implementation of new technology. Further

information from that meeting will be sent to OCSCIS members. Any other Soil and Crop members that are interesting this information can contact one of the OCSCIA directors.

As for projects this year, we have applied for a Major Grant project that incorporates variable rate planting technology in the field. More information will be released once approval is completed.

We are also putting together ideas for a summer meeting. Stay posted for additional information.

Grenville SCIA

President -

Harry Bennett
Tel: 613-258-3445

Email: hbennett@harvex.com

Secretary-Treasurer -

Bryan Cook
Tel: 613-658-5580 (office)
Email: cropland@jcis.ca

Farm Comes to Town

Kemptville College
April 27th, 2011
Corn display and presentation to Grade 4 students - 8 schools will be attending

Grenville Farm Family Day

Clearydale Farm, Spencerville
August 3rd, 2011
Guest speaker



Lanark SCIA

President:

Mark Foster
613-257-1585

Email: jockbrae.farm@gmail.com

Secretary-Treasurer:

Robert Campbell
613-267-6461

Email: rosecamp@ripnet.com

See page 4

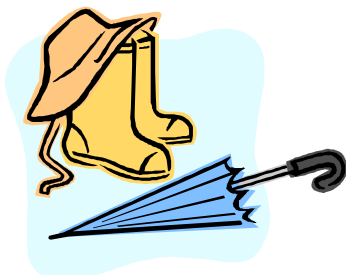
for Seed Show Results

Watch for details

of our

summer events

in the next newsletter

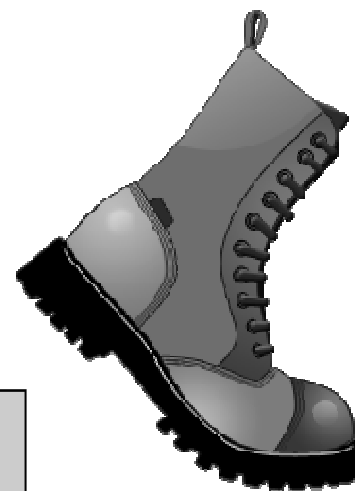


Renfrew OSCIA

President –
Ian McGregor
613-432-2754

Secretary/Treasurer--
Glen Smith --
613-628-2987

Forge Masters
Contact Dean Matheson
Tel: 613-646-9622
Deadline for entries is
April 18, 2011



Frontenac SCIA

President -
John Sutherland
613-387-3957

Secretary -
Henry Posthumus
613-385-2078

Watch for details
of our
Summer Activities
in
Upcoming newsletters!!



Leeds SCIA

President
Lee Grant 613-359-5938

Secretary

Tony Gunnewiek 613-359-5701

Treasurer

Don Gordon 613-359-6047

A very successful seed show was held Mar 2nd with a good showing of entries in most classes with an exceptional turnout of 4H entries.

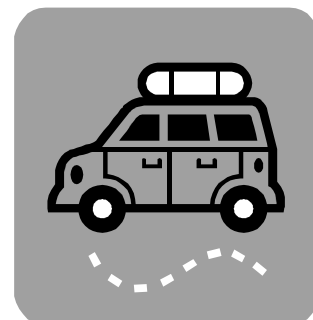
The Forge Maters program is being planned for this year, so if

you would like to try your hand at this competition call George Webster 613-659-2411 or Lee or Tony.

Suggestions for a summer Car Tour are being made to visit Hendrik Seeds and Roosdale Elevator. Stay tuned for details

There is still time to renew your 2011 membership. Contact Tony or any Soil & Crop Director.

Next directors meeting is Thursday, April 7th, 12:30 noon at Don Gordons.



Lanark SCIA - 2011 Forage and Seed Show Results

A special thanks to M & P Equipment for their help to make our show a success!!

Class	Description	1 st Place	2 nd Place	3 rd Place
12	Oats	Ray Halpenny		
14	2 Row Barley	Ray Halpenny		
15	6 Row Barley	Paul Thompson	Andrew Allan	Taylea Farms
16	Spring Wheat	Nandale Farm	Andrew Dawson	John Vanderspank
18	Hard Winter Wheat	John Vanderspank		
24	Soybeans	Taylea Farms	Ray Halpenny	Andrew Dawson
28	Red Clover	Jim Tims		
32	1st Cut Alfalfa	Nandale Farm	Taylea Farms	
34	1 st Cut Legume/Grass	Twin Peaks	Ray Halpenny	Nandale Farm
35	1 st Cut Grass	Nandale Farm	Ray Halpenny	Reggie Campbell
36	2 nd Cut Alfalfa	Nandale Farm	Taylea Farms	Twin Peaks
37	2 nd Cut Legume/Grass	Ray Halpenny	Jim Tims	Twin Peaks
40	Haylage	Jockbrae Farms	Nandale Farm	Jim Tims
41b	2 nd Cut Baled Haylage	Twin Peaks	Jim Tims	Andrew Allan
43	Corn Silage	Andrew Allan	Jockbrae Farms	Taylea Farms
44	10 Ears Corn	Robert Campbell	Nandale Farm	Taylea Farms
45	Shelled Corn	Taylea Farms	Ray Halpenny	Twin Peaks
47	Bin Run Corn	Taylea Farms	Nandale Farm	Robert Campbell
48	Sheaf	Ray Halpenny		
49	Analysis Class	Jim Tims	Nandale Farm	Taylea Farms
50a	Export Hay 1 st Cut	Ray Halpenny	Nandale Farm	Reggie Campbell
50b	Export Hay 2 nd Cut	Nandale Farm	Twin Peaks	Ray Halpenny

Grand Champion – Ray Halpenny

Reserve Champion – Nandale Farm

Leeds SCIA - 2011 Seed & Forage Show Results

Class	Description	1 st	2 nd	3 rd
12	Oats	Rowspine Farm	Dwyre Farm	
14	2 Row Barley	Alex Oosterhof	Don Gordon	
15	6 Row Barley	Gunnebrooke Farm	Ross Hawkins	Leslie Welch
18	Hard Winter Wheat	Ross Hawkins		
24	Soybeans	Scott Jackson	Gunnebrooke Farm	Chantland Farm
32	1 st Cut Alfalfa	Dwyre Farm	Scott Jackson	
33	1 st Cut Legume	Scott Jackson		
34	1 st Cut Legume/Grass	Dwyre Farm	Scott Jackson	
35	1 st Cut Grass	Dwyre Farm	Scott Jackson	Chantland Farm
36	2 nd Cut Alfalfa	Bill Berry	Chantland Farm	Scott Jackson
37	2 nd Cut Legume & Grass	Dwyre Farm	Alex Oosterhof	Rowspine Farm
39	2 nd Cut Round Bale	Sid Vanderwerf	Don Gordon	
40	Haylage	Scott Jackson	Alex Oosterhof	Gunnebrooke Farm
41A	1 st Cut Baled Haylage	Dwyre Farm	Bill Berry	Rowspine
41B	2 nd Cut Baled Haylage	Gunnebrooke Farm	Andreas Baumann	Scott Jackson
42	Oat Silage	Dwyre Farm	John Ferguson	
43	Corn Silage	Gunnebrooke Farm	Don Gordon	Dwyre Farm
44	Grain Corn	Scott Jackson	Vogeldale Farm	Chantland Farms
45	Shelled Corn	Scott Jackson	Rowspine Farm	Leslie Welch
47	Shelled Corn Bin Run	Scott Jackson	Gunnebrooke Farm	Ross Hawkins
50	Special Export Hay	Dwyre Farm	Scott Jackson	
B	Processed High Moisture Corn	Don Gordon	Alex Oosterhof	Dwyre Farm
4 H	15 Exhibitors, 80 entries			
4-H	29 Exhibitors, 66 Entries			

Grand Champion Trophy donated by Dixie & Egan to Scott Jackson

Reserve Champion – Dwyre Farm

Renfrew SCIA - SEED, FORAGE AND AGRI-BUSINESS SHOW

2011 Award Winners

The number of entries and exhibitors were up from 2010. There were 24 exhibitors and 133 exhibits in the show.

Grand Champion Exhibit of the Show – Bert Welton, Renfrew

Reserve Grand Champion Exhibit of the Show – Larry Reaburn, Westmeath

Champion Hay Exhibit – Curtis Schultz, Douglas

Champion Pedigreed Exhibit – Larry Reaburn, Westmeath

Grand Champion Exhibit in the Jr. Classes – Curtis Schultz, Douglas

Reserve Grand Champion Exhibit in the Jr. Classes – Jamie Schultz, Douglas

Grand Champion Exhibit from 4-H Classes 59, 61 to 74 – Curtis Schultz, Douglas

First Time Jr. Exhibitor with the Highest Placing Exhibit – Olivia Reid, Renfrew

Champion Forage Exhibit in the Jr. Classes – Curtis Schultz, Douglas



Summer Activities

Twilight Meeting and Crop Tour

July 27th, 2011

More details in the next newsletter

Please visit our display at Expo 150

June 9, 10, 11 and 12, 2011



Frontenac SCIA - 2011 Seed and Forage Show Results

Class	Description	1 st Place	2 nd Place
12	Oats – 8 lb	Gary Gordon	
14	2 Row Barley	Gary Gordon	
15	6 Row Barley	Gary Gordon	John Sutherland
24	Soybeans – 8 lbs	Jack Broeders	Mallenmar Farms
32	1 st Cut Alfalfa 85%+	Gary Gordon	Mallenmar Farms
33	1 st Cut Legume -- 85%+ Not Alfalfa	Gary Gordon	
34	1 st Cut Legume & Grass - 70/30 mix	Gary Gordon	John Sutherland
35	1 st Cut Grass 85%+	Gary Gordon	Mallenmar Farms
36	2 nd Cut Legume - 85%+	Gary Gordon	Jack Broeders
37	2 nd Cut Mixed Legume & Grass	Gary Gordon	Jack Broeders
38	1 st Cut - Large Sq or Round	Gary Gordon	Raymond Shannon
39	2 nd Cut - Large Sq or Round	Gary Gordon	John Sutherland
40	Haylage – 5 lbs	Raymond Shannon	Gary Gordon
41a	1 st Cut - Haylage – Rd Bale	Raymond Shannon	Gary Gordon
41b	2 nd or 3 rd Cut - Haylage – Rd Bale	Gary Gordon	Raymond Shannon
43	Corn Silage	Raymond Shannon	Jack Broeders
44	10 ears Grain Corn	Gary Gordon	Gary Gordon
45	Shelled Corn - 8 lbs- variety named	Gary Gordon	Raymond Shannon
46	Early Potatoes	Gary Gordon	Gary Gordon
49	Best Sheaf - Cereal Grain	Gary Gordon	Gary Gordon
50a	1 st cut – small bale	Gary Gordon	John Sutherland
50b	2 nd cut – small bale	Gary Gordon	
4H-51	Potatoes - 10 tubers - variety named	Lindsay Gordon	Ben Gordon
4H-52	Oats - 2 kg	Ben Gordon	Lindsay Gordon
4H-53	Barley - 2 row - 2 kg	Lindsay Gordon	Ben Gordon
4H-54	Barley - 6 row - 2 kg	Ben Gordon	Lindsay Gordon
4H-58	Grain Corn - 10 ears, variety named	Lindsay Gordon	Ben Gordon
4H-73	1st cut legume & Grass 70/30 either way	Ben Gordon	Lindsay Gordon
4H-74	2nd cut mixed legume & grass either way	Lindsay Gordon	Ben Gordon

Thanks to the Sponsors of the 2011 Frontenac Seed and Forage Show



McCann Farm Automation
 Agricorp – Bill White
 Baker's Feed Store
 Clow Farm Equipment
 Cochrane Fuels
 Dowline Structures
 Farm Credit corporation
 Fred Schapelhouman (Pickseed)
 Frontenac County Holstein Club
 Garrett's Meat Shop
 Gateview Equipment
 Glenburnie Groceries
 Gordon French (Professional Investments)
 Hartington Equipment

Hendrick Agrifoods (Jim Wallbridge)
 Bank of Montreal (Jeff Treptow)
 Kingston Feed & Farm
 Leonard Fuels
 LFI Farm Supplies
 Mahon Farm Equipment
 Moore Bros.
 Northway Home Hardware
 Quinn's Meats
 Renewable Energy of Plum Hollow
 Rosen Energy Group
 St. Lawrence Veterinary Services
 Stinson Fuels
 Wallace Beef



OMAFRA Update

Food Safety and Traceability Initiative

The Food Safety and Traceability Initiative (FSTI) program application and guidebook version 3 are now available on the ministry website

(see <http://www.omafra.gov.on.ca/english/food/foodsafety/grants/fsti.htm>). These documents outline program eligibility and the application process.

Completed applications will be accepted by email, fax or in-person starting at **10:00 am EST April 5, 2011** or 9:00 am CST and will be received on a first come – first served basis. *Note, only 1 application per person will be accepted.* Mailed /couriered applications (which may be mailed prior to April 5th) will be selected at random from all those received in Guelph starting at 10:00 a.m. April 5th. Applicants are strongly encouraged to review the program guidelines before applying for cost-share funding. If you have further questions about the program or your eligibility, you can call 1-888-479-3931, or e-mail growingforward@ontario.ca.

Agriculture-Wildlife Conflict Strategy: Comment by April 11!

The Ontario government is proposing an agriculture-wildlife conflict strategy as part of the implementation of the province's Strategy for Preventing and Managing Human-Wildlife Conflicts in Ontario (2008).

This proposal has been posted for a 45 day public review and comment period starting February 25, 2011. If you have any questions, or would like to submit your comments, please do so by April 11, 2011.

To view the Regulation Proposal, please see:

<http://www.ebr.gov.on.ca/ERS-WEB-External/displaynoticecontent.do?noticeId=MTEyMzkw&statusId=MTY4NTgy&language=en>

For further background, please visit:

http://www.omafra.gov.on.ca/english/policy/brm_wildlife/wildlifepaper.htm

OMAFRA Update (cont'd)

Survey: Farmer's Interest in A Poultry Abattoir for Frontenac County?

The NFU has received a grant from Frontenac County to develop a feasibility study/ business plan for a new poultry abattoir. The NFU has retained the consulting firm, Expansion Strategies of Montreal to do this study. The first step in this feasibility study is to assess the likely demand from local farmers for the services of such a poultry abattoir.

We are asking any Frontenac farmers who raise or are interested in raising poultry for slaughter and sale to contribute to this project by answering a short questionnaire. Some farmers will be contacted directly by the consultant. If you have not been contacted the questionnaire is available on the NFU website here: [Poultry Survey \(PDF\)](#).

By answering this questionnaire you may help establish the size of the market for such an abattoir. Your personal information will be kept private. If you have any questions about this survey you can contact me, David Hahn, or the consultant, Jacques Grysole. You can either print the survey on your computer and mail it to the consultant or contact me and I will have someone call you to do the survey with you.

David Hahn, Director Local #316, NFU Chair, Poultry Abattoir Review Committee 613-273-5545
dhahn@rideau.net

Grain Marketing Workshop

March 29th - City of Ottawa - Goulbourn Municipal Building, 21 35 Huntley Road, Stittsville (Stanley Corners). Learn about Market Fundamentals and pricing; What impacts the basics; Cost of Production; Pros and cons of marketing tools; Marketing strategies; Bring it all together in your plan. Cost \$50. Registration contact Adam Brown phone 613-580-2424 x28352, email ruralaffairs@ottawa.ca Lunch and refreshments provided.

Nature In Deed: A Resource for Non-Farming Rural Residents

Nature In Deed is a portal to a wide range of resources about living in a rural environment. You'll find links to people and resource agencies who can provide answers to just about any property-related question you have. The purpose is to help rural landowners understand the

broader landscape in which their home is situated. Please see www.natureindeed.com.

Nature In Deed is a brand new website and we're eager to know if you find it helpful. If you have tips you'd like to pass along to other rural landowners, please contact the webmaster@natureindeed.com.

Partners: Community Stewardship Council of Lanark County, Eastern Ontario Model Forest, Frontenac Arch Biosphere Reserve, Ontario Fur Managers' Federation, Ontario Ministry of Natural Resources, Pine Grove Productions, Wildlife Habitat Canada.

Job Opportunities for Students

Students across the province can now apply for a broad range of exciting summer jobs through the Ontario government.

Ontario's Summer Jobs Program connects students to jobs in the private sector or government and offers support to help young entrepreneurs launch their own summer business. It provides lots of opportunities for students to turn their passion into a summer job and gain important work experience for successful careers. Students aged 15 to 30 who plan to return to school this fall are eligible and can apply through Ontario.ca/SummerJobs, where they can:

- Find job listings
- Search for a job through [Employment Ontario](#) agencies
- Get help to improve their marketing skills and resume writing
- Learn how to start their own [Summer Company](#)
- Apply for a job with the [Ontario government](#).

Employers are also encouraged to hire students and provide hands-on training for tomorrow's workforce through a [\\$2-per-hour hiring incentive](#).

Summer Jobs is part of the McGuinty government's [Open Ontario plan](#) to help every student succeed and build a knowledge-based economy for the future.



Need Someone to talk to?

**THE
FARM
LINE**



1-888-451-2903

Confidential/anonymous
Peer Support & Referral
For Ontario farmers and rural families
On line resources
Check out the updated web page at:
www.thefamline.ca

Agricorp Dates

Are available
At

www.agricorp.com/en-ca/

Field Crop issues or questions?
Contact Cropline at

1-888-449-0937

OMAFRA crops webpage:-
www.omafra.gov.on.ca/english/crops/index.html

Eastern Ontario Crop Diagnostic Day

Watch for details
Winchester Research Station,
University of Guelph,
Winchester
Registration 8:30 am
Contact OMAFRA
Kemptville 613-258-8295

Regional News

Ottawa Rideau Regional Soil and Crop Improvement Association

Executive:

President Jason Pyke
Vice PresidentJennifer Doelman
Past PresidentJohn Nanne
Secretary TreasurerShirley Munro
Communications CoordinatorShirley Munro

Regional Directors:

Ottawa CarletonBruce Hudson
Alt-Kevin Ferguson
FrontenacJason Pyke
Alt - Raymond Shannon
Grenville.....Bryan Cook
Alt -
LanarkJohn Nanne
Alt - Peter MacLaren
LeedsScott Jackson
Alt - Rita Vogel
RenfrewJennifer Doelman
Alt - Ian McGregor

OSCIA Provincial Directors

Peter McLaren
OMAF Crop Technology Contact:
Scott Banks, Emerging Crops Specialist

Local OSCIA Program Representatives

OSCIA Program Representatives will be assisting with the delivery of the NMFAP. The following is the contact list for Eastern Ontario.

Carleton, Dundas, Grenville
- Arlene Ross 613-821-3900
Lanark - Shirley Munro 613-267-6362
Frontenac, Leeds
- Rita Vogel 613-275-2956
Renfrew - Glen Smith 613-628-2987
Glengarry - Lyall McLaughlin
613-347-2244
Prescott-Russell - Micheline Begin
613-679-8867
Stormont - Barbara Ann Glaude
613-984-2398

Info Source

Keep up to date on Soil and Crop events across the province by joining the listserve. Visit www.ontariosoilcrop.org for information.

Nutrient Management 2011 Training Courses: Fee structure varies. To register call the Nutrient Management Information Line: 1-866-242-4460
www.omafra.gov.on.ca/english/nm/cert/courses.htm

Ontario Pesticide Education Program, Ridgetown College, University of Guelph. Phone 1-800-652-8573 or 519-674-1580 Fax: 519-674-1589 or Email:
opep@ridgetownc.uoguelph.ca
www.opep.ca/growertraining/Courses.cfm

Latest information from the Ontario Forage Council
www.ontarioforagecouncil.com

Crop-Pest Ontario can be found at
www.gov.on.ca/OMAF/english/crops/field/news/#croppest

"Programs and Services for Ontario Farmers" - a Factsheet that gives a short overview and the contact locations for the many programs available. To view <http://www.gov.on.ca/OMAFRA/english/busdev/facts/o4-051.htm>

OMAFRA Virtual Beef E-newsletter:
<http://www.omafra.gov.on.ca/english/live/stock/beef/news/vbn0707.htm>

OMAFRA Website:

www.ontario.ca/omafra

Agricultural Information Contact Centre:
1-877-424-1300 or e-mail

ag.info.omafra@ontario.ca

Growing Forward Information Line:

1-888-479-3931 or email

growingforward@ontario.ca

Grain Drying and Storage Workshops 2011

Grain drying and storage workshops are again being offered this year to serve farmers' needs. These workshops are for you; if you want a better understanding of grain drying and storage principles, if you are planning a new system, if you are expanding your system, or are considering modifications to your grain handling system. Come and get your questions answered.

Free discussion is encouraged throughout the workshops which results in good exchange of information among participants. The topics covered in the workshops will include the following:

- How Grain Dries
- Types of Drying Systems
- Fan Sizing & Selection
- Dryeration/Cooleration
- Aeration to Keep Grain in Condition
- Locating Drying & Storage Systems
- Traffic Flow Considerations
- Reducing Drying Energy

April 6th - at Barclay Dick & Son, Douglas. 9:00 am to 4:00 pm - as part of an Open House Week Education Series.

Workshop 9:00 a.m. - 4:00 p.m.

Instructor Helmut Spieser, Engineer, OMAFRA

Spaces are limited, so register early \$55.00 (lunch included)

To Register Call Ag Business Centre, University of Guelph, Ridgetown Campus
1-866-222-9682 or 519-674-1500 ext 63592

WOODSTOCK: March 30th — OMAFRA, 401 Lakeview Drive, Hwy 59N

**PICTON: April 7th —Cherryvale Organic Farm, 1927 County Road 10
(Cherry Valley)**

OTTAWA RIDEAU SOIL AND CROP NEWS

Serving Grenville, Lanark, Leeds, Ottawa-Carleton, Renfrew and Frontenac
Special thanks to Pioneer Seeds & CIBC for their help with our Regional Tour!!



June 2011

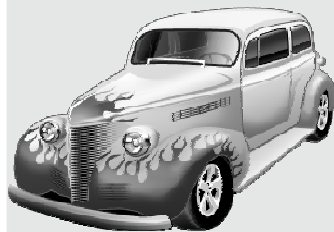
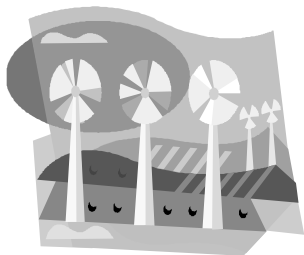
Next Newsletter Deadline
September, 2011

Inside this issue:

Lanark Award of Merit	2
County Updates	3-4
OMAFRA Update	5
Regional News	7
Upcoming Events	8
GYFP Update	9
Getting' It Done in Grenville County	10
COFSP Update	10
Monthly Meetings	10

Also included:

- OSCIA News
- Crop Talk



Regional Car Tour

Wednesday, July 27th, 2011

Wolfe Island Wind Farm, Solar Micro-fit, Bison & Plot Tour

Pre-registration for lunch is required by July 24th, 2011

Tour Schedule

Catch the 10:30 am Kingston-Wolfe Island Ferry,
at 295 Ontario St, Kingston

Please park your car in the Ferry parking lot in Kingston as we will be picked up by school bus when we reach the Island. Refreshments and washrooms are available at Tim Horton's - next door to the Ferry parking lot and docking area. Washrooms are also available at the Ferry docks.

Note: it is advised that we be at the Ferry by 10:15 am for the 10:30 am departure. We will be met by a Soil and Crop member here. If you miss this Ferry the next one is at 11:30 am and you can join us at Pykeview Meadows for lunch and the afternoon plot and solar tours.

A Bison BBQ lunch will be hosted by Pioneer Seeds
at Pykeview Meadows, 1465 Road 95, Wolfe Island

For more information and pre-registration

Contact: Shirley Munro, RCC
Tel: 613-267-6362 Email: c-s-munro@live.com

Or

Jason Pyke, President ORRSCIA
Tel: 613-385-2941

Email: pykeview@kingston.net
Please see back cover for map



SERVING GRENVILLE,
LANARK, LEEDS,
OTTAWA-CARLETON,
RENFREW AND
FRONTENAC

Ottawa-Rideau Regional Soil
and Crop Improvement
Association

c/o Shirley Munro

Regional Communications
Coordinator

RR #7,

570 Cameron Side Road

Perth, ON K7H 3C9

Phone: 613-267-6362

Fax: 613-267-0258

Email: cs-munro@live.com

TO COMMUNICATE
AND FACILITATE
RESPONSIBLE
ECONOMIC
MANAGEMENT OF
SOIL, WATER, AIR
AND CROPS

Canada Post Publications
Agreement #1924648

Lanark Award of Merit goes to.....

Congratulations to Robert Campbell of Rosecamp Farm near Balderson, where he farms with his lovely wife Janet. The Lanark County Soil and Crop Improvement Association presented Robert with an Award of Merit at their Annual Seed and Feed Show in March, recognizing his life long commitment to agriculture in the county.



Robert Campbell is presented with a well deserved Award of Merit by Past President Andrew Dawson

Robert became a Soil and Crop member at a young age around 1980. He and his family hosted the Lanark County Hay Day in 1993, winning the Lanark County Forage Master competition in both 1993 and 1994. He was elected as president during 1998 and 1999. A very committed member, he has been the Secretary-Treasurer, and it might be said the "chief organizing officer," since 2000 of the LCSCIA.

The Soil and Crop doesn't command all of Robert's energy. As a child and teenager he helped and worked with his grandfather and his Mom and Dad at the Perth Fair. He was elected as a director of the fair board in 1985, and President during the year 1991-1992. He has been active in many different sections of the fair, the Gates Committee, Large Vegetable Competition and Chairman of the Field Crops (Seeds & Grains) Committee.

In 1994, Robert became a member of the Lanark County Milk Producers, serving as Chairman in 1997, as well as Secretary-Treasurer. Throughout the years he worked at the Milk Booth at the International Plowing Match in both Renfrew and Carleton

Place; and organized and helped run the Milk Booth at the Perth Fair.

Never one to let the dust settle around he feet, he participated in the 2003 International Plowing Match helping with the Machines in Motion display.

The dairy herd was sold in July 2005. It seems he missed growing his alfalfa fields, so to compensate for that, he became and still is an avid grass cutter at the Campbell Cemetery, as well as organizing and cutting grass at the country church grounds.

Since 2007 to the present day Robert has been a board member of the Glad Tidings Pentecostal Church, serving as board secretary since 2010.

The main farm livelihood is now eggs, having 15,000 laying hens. Along with some cash crops, grain corn and soybeans, Robert is also trying his hand at generating solar power.

CONGRATULATIONS ROBERT!!

Ottawa-Carleton SCIA



President: Meghan Gilmer
Tel: 613-882-0541

Email: mgilmer@xplornet.com

Secretary: Lisa Flewellyn
Tel: 613-832-1355

Email: lflewellyn@gmail.com

The Ottawa Carleton Soil & Crop Improvement Association will be have a summer meeting at Vernon Valley Farms on Thursday, July 21, 2011.

There will be a BBQ lunch followed by presentations on Variable Rate planting and Planter down Force, plot work done on farm. Greg Stewart will be the guest speaker discussing factors to consider when Variable Rate planting.

More details to follow by mail and email in the next few weeks.

Grenville SCIA

President -

Harry Bennett

Tel: 613-258-3445

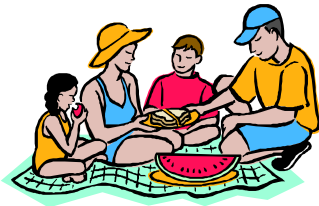
Email: hbennett@harvex.com

Secretary-Treasurer -

Bryan Cook

Tel: 613-658-5580 (office)

Email: cropland@jcis.ca



Grenville Farm Family Day

Clearydale Farm, Spencerville
August 3rd, 2011

Guest speaker
Powerbase Energy Systems Inc

Lanark SCIA

President:

Mark Foster
613-257-1585

Email: jockbrae.farm@gmail.com

Secretary-Treasurer:

Robert Campbell
613-267-6461

Email: rosecamp@ripnet.com



Twilight Meeting

June 30, 2011

RCMP Farm - 7:00 pm

Doug, Doreen, Ray & Laurie
Russells - 8:00 pm

Renfrew OSCIA

President –
Ian McGregor
613-432-2754

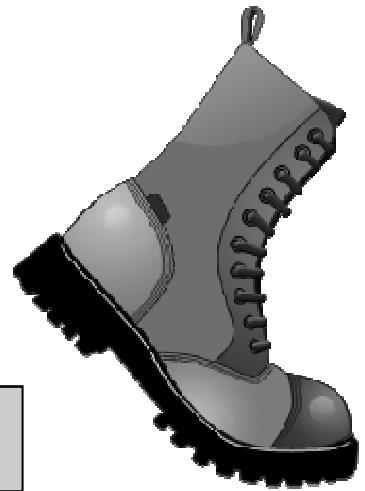
Secretary/Treasurer--
Glen Smith --
613-628-2987

Twilight Meeting and Crop Tour

July 20th, 2011, 7:00 pm

Starting at the Hemp plots of
Rueben Stone, 4192 Stone Road and
the Stafford Line.

Contact Ian McGregor or Glen
Smith for more details.

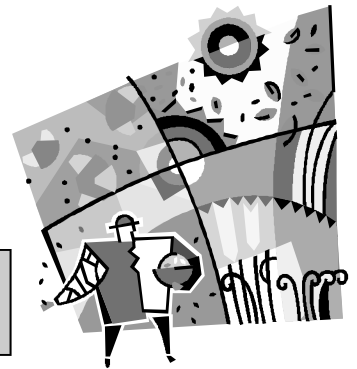


Frontenac SCIA

President -
John Sutherland
613-387-3957

Secretary -
Henry Posthumus
613-385-2078

Watch for details
of our
Summer Activities
in
Upcoming newsletters!!



Leeds SCIA

President

Lee Grant 613-359-5938

Secretary

Tony Gunnewiek 613-359-5701

Treasurer

Don Gordon 613-359-6047

As a former resident of Wolfe Island, I am encouraging members of the Leeds Soil & Crop to join the Regional Tour of the island, visiting the Wind Turbines with an exclusive tour guide.

LEE GRANT, PRESIDENT

Executive Summer Barbeque

July 21st, 2011

7:00 pm

Sid Vanderwert's

Fall Director's Meeting

October 6, 2011

8:00 pm

Location to be arranged



OMAFRA Update

News Items

- **Online Inventory of Local Food to Launch This Fall**
- **Ontario's Emergency Public Warning System**
- **Daily Ag Financial News – Right to your Inbox**
- **Follow your Regional OMAFRA Field Staff on Twitter**
- **Canada's Organic Regulations Coming into Effect**
- **Business Plan Wizard – Online Tool**
- **Grain Farmers of Ontario has Launched an Interactive Map**

Online Inventory of Local Food to Launch This Fall

Registration is now open for Ontariofresh.ca, the new free website and online community that is being created to expand the market for buyers and sellers of local Ontario food. The aim is to make connections across the food service value chain, linking bulk buyers, chefs, restaurants, caterers and distributors as well as growers and producers. Register for a profile today, and let Ontariofresh.ca help get your business connected. This site will provide buyers, both inside and outside of broader public sector institutions, with the opportunity to find new local food sources that are right for their business. At the same time, farmers will be able to make new business connections with buyers who are interested in the products they raise and/or grow. The marketplace feature will allow users to make requests for items or product offerings that may be available at a moment's notice. Throughout the spring and summer, information will be collected and profiles built to prepare for the full www.Ontariofresh.ca launch in September. You can register your business' profile at Ontariofresh.ca or by calling 1-888-249-9399 or 647-426-8420.

Ontario's Emergency Public Warning System

Ontario's Emergency Public Warning System is a tool that provides timely and accurate information to Ontario residents, businesses and visitors during an emergency. The system allows Ontarians to receive two types of warnings - Red Alerts and Emergency Information Advisories.

To sign up for Red Alerts or Emergency Information Advisories, please visit www.ontario.ca/emo.

Red Alerts

The province issues a Red Alert to provide recommended immediate actions to protect citizens, their families and others when there is an imminent threat to life, public safety or property. Each Red Alert will include a brief description of the event, location and recommended actions.

Some situations in which a Red Alert may be issued include:

- Large fire or explosion
- Chemical leak or spill
- Nuclear emergency
- Extreme weather events
- Transportation accident

Red Alerts will be posted on the Emergency Management Ontario (EMO) website and distributed through the media, email, Really Simple Syndication (RSS) feeds, Short Message Service (SMS) text messages and Twitter.

Emergency Information Advisories

An Emergency Information Advisory provides information to Ontarians about current or evolving emergency situations or events. Advisories may recommend protective actions to take.

Ontario's Emergency Public Warning System complements community emergency management programs, which may include public alerting mechanisms such as automated phone calling, in-home tone-alert radios and sirens. For any inquiries, please contact askemo@ontario.ca

OMAFRA Update (cont'd)

Daily Ag Financial News – Right to your Inbox

MarketView is a brief daily email commentary of financial news that impacts Ontario's agriculture sector. It provides a recap of commodity prices and trends, interest rate information and energy prices from a layman's point of view. The intent is to deliver a brief summary of news from global financial sources which influences agricultural markets. The commentary is different from most economic information because it is taken from an investor's perspective, and looks at how financial information may influence their investment decisions, which ultimately lead to movement in commodity market prices. Email Jennifer Stevenson at jennifer.stevenson@ontario.ca to subscribe.

Follow your Regional OMAFRA Field Staff on Twitter

@GillesQuesnel

IPM Specialist with the Field Crop Team, Ontario Ministry of Agriculture, Food and Rural Affairs, Kemptville

Canada's Organic Regulations Coming into Effect

For the past 2 years, organic producers have been preparing for Canada's new Organic Products Regulations. As of June 30, 2011, those regulations will be in full effect. At that time, the Canadian Food Inspection Agency will launch its standard compliance and enforcement activities.

These activities include:

- holding non-compliant products and/or removing them from store shelves
- correcting non-compliant labelling
- returning non-compliant imported products to the country of origin.

The regulations set out rigorous standards for certifying products as organic by accredited certification bodies.

Products that meet the production requirements and contain at least 95 percent organic content may be labelled as "organic." They may also feature the Canada Organic logo. To learn more click on the weblink at:

<http://www.inspection.gc.ca/english/fssa/orgbio/20110310inde.shtml>

Business Plan Wizard – Online Tool

The Business Plan Wizard is an e-learning tool developed by the Ministry of Economic Development and Trade (MEDT). This application, designed for enterprising youth and adults, presents the theory and skills of developing a business plan in a fun and interactive way. The audio-supported course materials are delivered in manageable increments or allows users the flexibility of going directly to the templates and developing their plan.

www.ontario.ca/youngentrepreneurs.

Grain Farmers of Ontario has Launched an Interactive Map

Grain Farmers of Ontario has launched this interactive map to help farmers and industry stakeholders keep track of up to date harvest situations. With the help of a network of farmers strategically placed across the province, the interactive map shows county by county information on the amount of acreage harvested at any given time.

Updated weekly, this tool will help farmers stay informed of the situation throughout the harvest season and it will also help stakeholders adjust plans according to the state of harvest.

<http://www.gfo.ca/Production/ProductionInteractiveMap.aspx>



in-

to

Need Someone to talk to?

**THE
FARM
LINE**



1-888-451-2903

Confidential/anonymous

Peer Support & Referral

For Ontario farmers and rural families

On line resources

Check out the updated web page at:

www.thefamline.ca

Agricorp Dates

Are available

At

www.agricorp.com/en-ca/

Field Crop issues or questions?
Contact Cropline at

1-888-449-0937

OMAFRA crops webpage:-

www.omafra.gov.on.ca/english/crops/index.html

Eastern Ontario Crop Diagnostic Day

Watch for details

Winchester Research
Station,

University of Guelph,
Winchester

July 19, 2011

Contact OMAFRA
Kemptville 613-258-8295

Regional News

Ottawa Rideau Regional Soil and Crop
Improvement Association

Executive:

President Jason Pyke
Vice PresidentJennifer Doelman
Past PresidentJohn Nanne
Secretary TreasurerShirley Munro
Communications CoordinatorShirley Munro

Regional Directors:

Ottawa CarletonBruce Hudson
Alt-Kevin Ferguson
FrontenacJason Pyke
Alt - Raymond Shannon
Grenville.....Bryan Cook
Alt -
LanarkJohn Nanne
Alt - Peter MacLaren
LeedsScott Jackson
Alt - Rita Vogel
RenfrewJennifer Doelman
Alt - Ian McGregor

OSCIA Provincial Directors

Peter McLaren
OMAF Crop Technology Contact:
Scott Banks, Emerging Crops Specialist

Local OSCIA Program Representatives

OSCIA Program Representatives will be assisting with the delivery of the NMFAP. The following is the contact list for Eastern Ontario.

Carleton, Dundas, Grenville
- Arlene Ross 613-821-3900
Lanark - Shirley Munro 613-267-6362
Frontenac, Leeds
- Rita Vogel 613-275-2956
Renfrew - Glen Smith 613-628-2987
Glengarry - Lyall McLaughlin
613-347-2244
Prescott-Russell - Micheline Begin
613-679-8867
Stormont - Barbara Ann Glaude
613-984-2398

Info Source

Keep up to date on Soil and Crop events across the province by joining the listserve. Visit www.ontariosoilcrop.org for information.

Nutrient Management 2011 Training Courses: Fee structure varies. To register call the Nutrient Management Information Line: 1-866-242-4460

www.omafra.gov.on.ca/english/nm/ert/courses.htm

Ontario Pesticide Education Program, Ridgetown College, University of Guelph. Phone 1-800-652-8573 or 519-674-1580 Fax: 519-674-1589 or Email:

opep@ridgetownc.uoguelph.ca
www.opep.ca/growertraining/Courses.cfm

Latest information from the Ontario Forage Council

www.ontarioforagecouncil.com

Crop-Pest Ontario can be found at www.gov.on.ca/OMAF/english/crops/field/news/#croppest

"Programs and Services for Ontario Farmers" - a Factsheet that gives a short overview and the contact locations for the many programs available. To view <http://www.gov.on.ca/OMAFRA/english/busdev/facts/o4-051.htm>

OMAFRA Virtual Beef E-newsletter:
<http://www.omafra.gov.on.ca/english/live/stock/beef/news/vbn0707.htm>

OMAFRA Website:

www.ontario.ca/omafra

Agricultural Information Contact Centre:

1-877-424-1300 or e-mail

ag.info.omafra@ontario.ca

Growing Forward Information Line:

1-888-479-3931 or email

growingforward@ontario.ca



Upcoming Events

July 8 - Frontenac Twilight meeting, 6:30 pm, farm of Ron and Paul Sleeth, 2114 Wellington St. Battersea. Fish fry & salads - cost adult \$15, under 12 years \$8. Contact Natasha Glaude-Abrams tanasha_17@hotmail.com

July 11 - Solar Energy Information Sessions - presented U of Guelph-Ridgetown Campus at the Royal Canadian Legion - **KINGSTON**. 7:00 pm. Guest speakers Thomas Boehni, a Swiss pioneer in solar energy, OMAFRA and Hydro One. Registration \$35 in advance or \$45

at the door. Pre-register by July 4 online at w2ww.ridgetownc.com/ce or by phone 1-877-480-9992 - Dezarae Mallet or email dmalott@uoguelph.ca

July 21 & 28 - Environmental Farm Plan Two Day Workshop - Perth, 7:00 pm to 10:00 pm. Contact Shirley Munro 613-267-6362 or lanark@ontariosoilcrop.org

July 27 & August 3 - Environmental Farm Plan Two Day Workshop - Perth, 7:00 pm to 10:00 pm. Contact Glen Smith 613-628-2987 or renfrew@ontariosoilcrop.org

July 30 - Ontario Sheep Marketing Agency Multi-Breed Ram and

Ewe Production Sale - Spencerville Fair Grounds. Morning education program - auction after lunch. Contact Gary Lapier 613-298-3983 or Fred Baker 613-327-8508

August 1 - Renfrew County NFU Executive Meeting, 7:30 pm. Barr Line community Centre. Contact Dave Mackay 613-582-7379 or 613-649-8211

August 19 & 26 - Environmental Farm Plan Two Day Workshop - TBA, 10:00 am to 3:00 pm. Contact Shirley Munro 613-267-6362 or lanark@ontariosoilcrop.org

August 24 & 31 - Environmental Farm Plan 2 day Workshop - Richmond, 10:00 am to 3:00 pm. Contact Arlene Ross 613-821-3900 or arlene.ross@ontariosoilcrop.org

Eastern Ontario Crop Diagnostic Day

Tuesday, July 19, 2011

8:30 am to 3:30 p.m.

at the

Winchester Research Station
Kemptville College, University of Guelph



Pre-registration by **Friday, July 8, 2011** for the *Eastern Ontario Crop Diagnostic Day* and save \$20.00. Pre-registration of \$55.00 includes lunch and materials. After July 8th, registration is \$75.00 per person. Certified Crop Advisor (CCA) continuing education credits will be available.

Topics include Cereal Management, Weed Resistance Management, Forages Management, Weed Control in Non GMO Soybean, Residual Herbicides in RR Corn, Weed ID, Tillage, Nitrogen on Corn, Pest Management and Soybean Management will be part of this year's day.

For further information contact the Kemptville OMAFRA Resource Centre at 613-258-8295.



Ministry of Agriculture, Food & Rural Affairs





Growing Your Farm Profits

Planning for Business Success

GROWING FORWARD BUSINESS DEVELOPMENT FOR FARM BUSINESSES

Growing Forward Business Development for Farm Businesses incorporates self-assessment and goal setting with a range of cost-share advisory services and skills development opportunities to help you reach your farm business goals.

There is a two-day workshop that will help you assess your current farm management practices, identify priorities and develop action plans aimed at reaching your business goals.

After completing the two-day workshop, a Workshop Leader will meet with you to review your action plans.

Approved action plans can be eligible for cost-share funding for advisory services and skills training.

Town	Day 1	Day 2	Contact
Kemptville	Tuesday September 13, 2011 10 am – 3 pm	Tuesday September 20, 2011 10 am – 3 pm	Shelley McPhail Tel: 613-256-4011 Fax: 613-256-6017 smcphail@ontariosoilcrop.org

Project Eligibility Policy and Procedures

To apply for cost-share, each qualified producer must submit one application with one proposal for each cost-share activity. (Refer to the PEPP for appropriate selection of the required proposal.) Applications can be picked up from your GYFP workshop leader or you can call OSCIA Guelph office and ask for one to be mailed to you. Select the appropriate proposal; read, complete, sign and mail to the OSCIA Guelph office. Make sure you use the following address: OSCIA, Business Development Program, 1 Stone Rd. Guelph, ON N1G 4Y2. Keep a copy of your application, proposal and any supporting documents.

Gettin' It Done in Grenville County

With 162 acres of hay down and ready to go this farm family knows how to get bales made.

The spectacle caused passers-by to stop and take a look.

Way to go boys & girls!!!!



COFSP Applications for 2012 Year

It is expected that applications for the Canada-Ontario Farm Stewardship Program (COFSP) will open on **September 15, 2011**.

Applicants are encouraged to review the COFSP Project Eligibility Policy and Procedures (Beginning September 15, 2010) document before submitting completed 2012 Project Proposal Application (PPA) forms to the OSCIA.

Please note that producers must have each of the following (as applicable) **before** submitting a PPA for cost-share funding:

- Producers with livestock or poultry as their primary commodity must have a Premises Identification (PID) Number for the property where the proposed project will be located, before applying for cost-share. This is a new requirement for the program. Contact OnTrace for an application form at www.ontraceagrifood.com or be calling toll-free 1-888-388-7223. You will be provided a PID number certificate to verify enrolment.
- Applicants must possess a current Farm Business Registration Number (FBRN) or equivalent
- A Third Edition EFP deemed appropriate through peer review.

Consult the OSCIA website regularly for updates at www.ontariosoilcrop.org or speak to your local OSCIA Program Representative, or contact the OSCIA Guelph office at 1-800-265-9751.

Monthly Meeting Schedule

Arnprior Region Federation of Agriculture Meetings are second Monday of each month. 8 pm. Galetta Community Hall. Contact Rick Cummings, President 613-832-3588

Frontenac Federation of Agriculture Meetings are last Thursday of the month. 7:30 pm, Glenburnie Church Hall. Contact Eileen Sleeth 613-353-2475

Grenville Federation of Agriculture Meetings are second Wednesday of the month, Spencerville Council Chambers, 8:00 pm Contact Carol Wynands 613-926-2579

Lanark Federation of Agriculture Meetings are SEOND Thursday of each month. 8:00 pm. Beckwith Township Hall, Blacks Corners.

NFU Lanark, Local 310 meets third Wednesday of the month. Contact Hilary Moore 613-259-5757

Leeds Federation of Agriculture Meetings are third

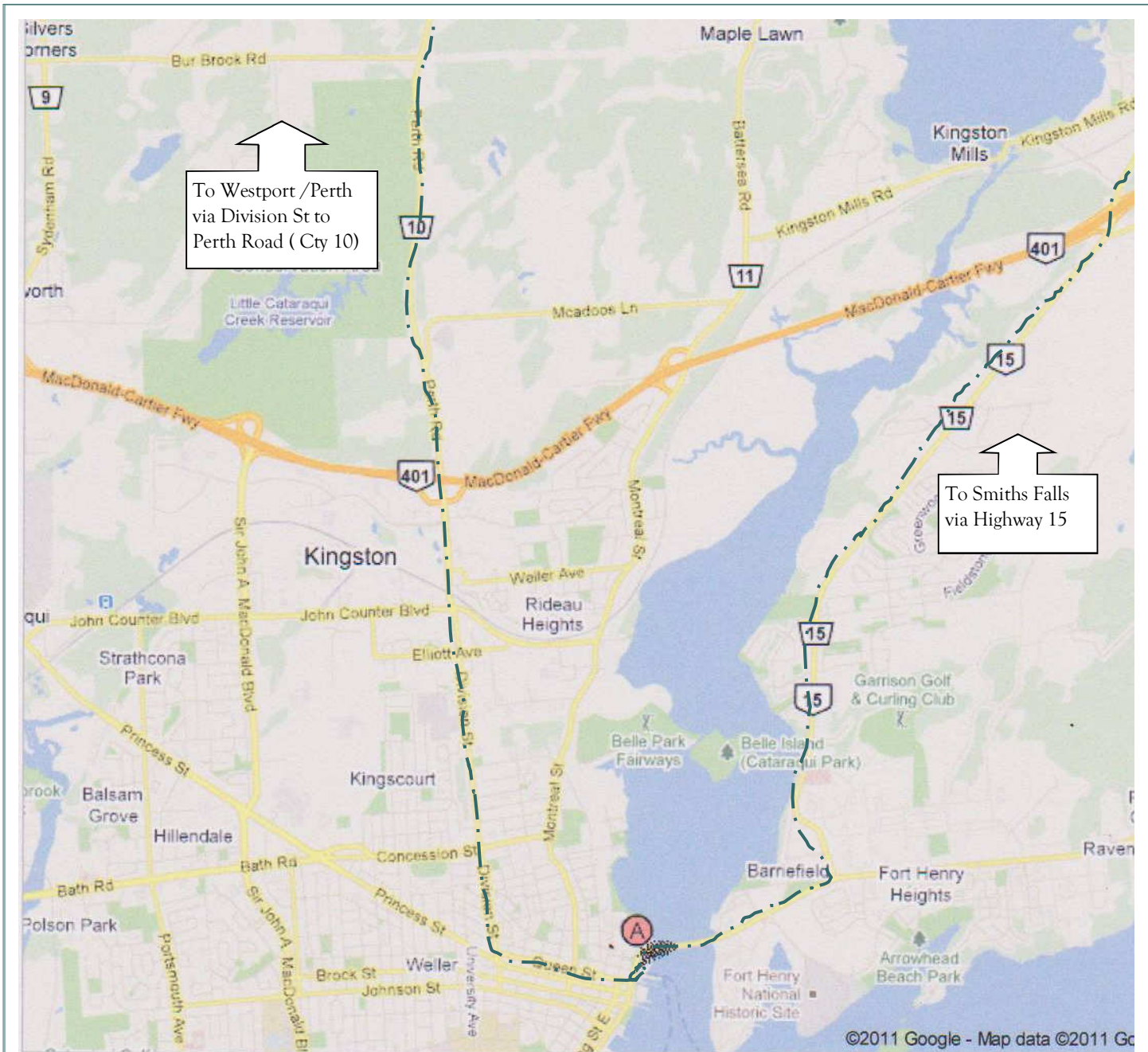
Thursday of the month, Delta Agricultural Fair Society Boardroom, Delta, 8:00 pm. Contact Eleanor 613-275-2981

Renfrew Federation of Agriculture Meetings are fourth Monday of each month. 7:30 pm at Opeongo High School.

Renfrew County National Farmers Union meets monthly. Contact NFU 613-582-7462 or 613-649-8211 for date and location.

Renfrew Plowmen's Association Meetings are fourth Thursday of each month at White Water Community Health Centre, 70 Main Street, Cobden at 7:30 pm. Contact Norman Eady 613-432-4200 or Marg Crozier 613-432-2560.

Renfrew County Cattlemen Meetings are third Thursday of the month, Cobden Agricultural Hall 7:30 pm. Contact Larry Schroeder 613-582-3222 or Donna Campbell 613-432-5568



From Perth take Scotch Line Rd to Westport, then the Perth Rd, which becomes Division St in Kingston. Turn left on Queen St - you will be at Tim Horton's when you reach Ontario St.

From Smiths Falls take Highway 15 to Kingston, turn right at Cr-2. Turn left at the traffic lights in to the Ferry loading and parking area. If you require Tim Hortons they are left at the next of lights.

If you are joining us for lunch and the afternoon agenda, Pykeview Meadows is at 1465 Road 95, which is to the right after you depart the Ferry.

Sincere thanks to Pioneer Seeds and Pykeview Meadows for lunch and CIBC for sponsoring the bus!!!